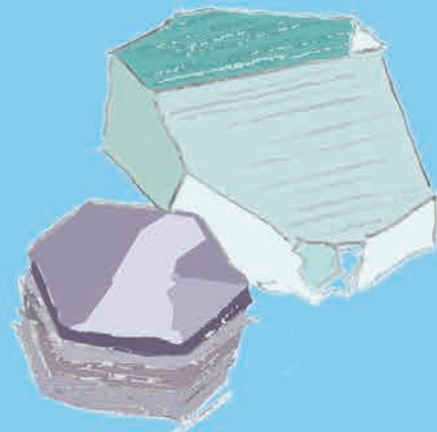
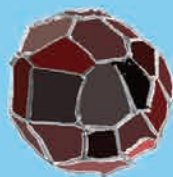


PALAEOARC / LIGA

5th International Conference 2024 - Stockholm, Sweden

Pre-conference excursion The Geology of Utö



Robert Dunst & Mattias Barkelius

Paleoarc pre-conference excursion to Utö, Sunday 26th May 2024

Leaders: Profs. Helen Coxall, Matt O'Regan & Alasdair Skelton, Stockholm University, IGV

Meeting time: 07.40. Bus departs: 8.00 from: Stockholm University Frescatihallens parkerings plats, Svante Arrhenius väg 6 (located next to the Frescati (SU main campus) sports hall, a 5-minute walk from the University tunnelbana station (see map below: bus and tree symbols).

Emergency contacts: Helen (+46 762 125 428) or Matt (+46 700 463 768).

Ferry to Utö (Gruvbryggan): departs 9.20 from Årsta brygga

Return ferry from Utö: departs 16.50 (Gruvbryggan)

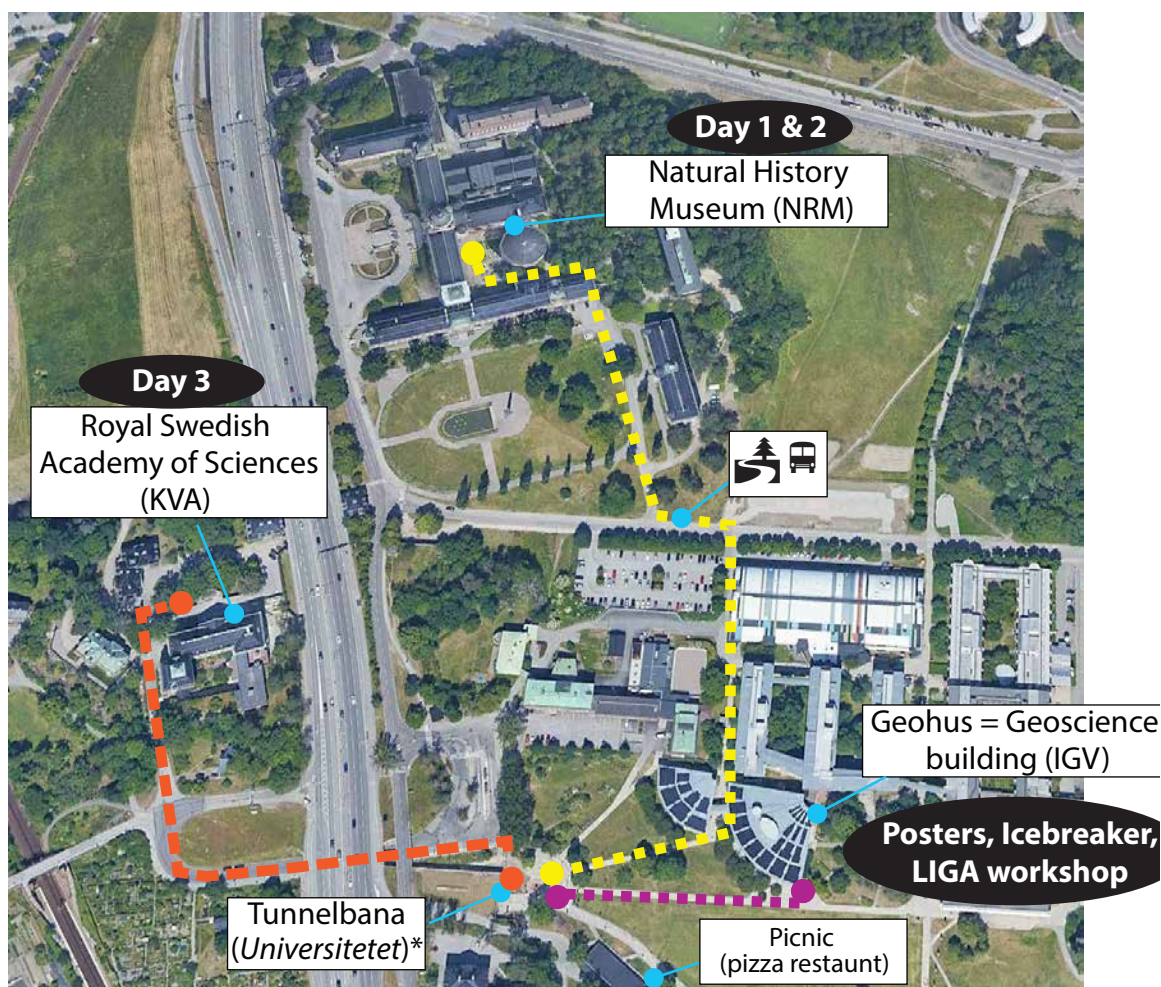
Return: bus from Årsta brygga: **17.35**


Finish time: arrival back at SU Frescatihallens car park by **18.30**.

The excursion will take you to the island of Utö in the Stockholm Archipelago. Coffee, water (and beer) can be purchased on the boat. On Utö, you will take a leisurely walking tour (max 1-2 km) to see interesting geology and land forms, from glaciated Baltic shield gneiss, glacial moraines, Proterozoic sediments that traces an ancient oceanic arc system, and Swedish mining history. This guide provides background information on Utö's geology and descriptions of localities that showcase key aspects of this. Our guide Alasdair will customize a route on the day depending on weather and participants.

Practical information: rocky terrain and forest paths. Strong running shoes or light walking boots are sufficient. Bring a rain jacket, water bottle, hat and sunscreen.

Lunch: We will eat lunch (included) in the Utö Vårdhus (12.30)



'Universitetet' has its own tunnelbana stop on the Red line, which runs to Mörby Centrum. Dashed lines = walking routes to the conference venues.  = bus pick-up/drop-off for the Utö excursion.